



NEXCOPY INCORPORATED



USB200PRO PARTITION TOOL

SOFTWARE USER MANUAL

NEXCOPY INCORPORATED

13 Orchard Road Suite 102 | Lake Forest | CA | 92630
Phone: 949 481 6478 | contact@nexcopy.com

PAGE I

NOTICE

COPYRIGHT DISCLAIMER

Copyright © 2010 - Current by Nexcopy Incorporated. All rights reserved.

This manual and the accompanying illustrations may not be copied, reproduced, electronically transmitted, or translated into another language, in whole, or in part, without the written consent of Nexcopy Incorporated.

Nexcopy Incorporated, USB200PRO, are trademarks of Nexcopy.

Other trademarks referred to in this manual are the property of their respective trademark or registered trademark holders.

WARRANTY

Nexcopy Incorporated warrants to the original purchaser the equipment you have purchased is free from defects in materials and workmanship, for a period of one year from the date of purchase.

All flash memory is warranted through the original manufacturer. Visit Nexcopy's web site for all [warranty information](#) on flash memory.

This warranty is applicable when the warranty registration has been completed and returned to Nexcopy Incorporated within a reasonable period of time following the original purchase. The warranty is not transferable. This warranty does not apply to malfunctions cause by misuse, negligence, accident, miss configuration, or alteration, nor is Nexcopy Incorporated responsible for consequential damages related to the use of this equipment. This warranty is made in lieu of any other warranty expressed or implied. Use of Nexcopy products and/or equipment is an implied agreement of such terms and conditions.

To register your product and receive emails for software and hardware updates please visit: www.nexcopy.com/product-registration/

PIRACY AND INTELLECTUAL PROPERTY RIGHTS

The copying of audio, video, software or other digital content without the permission of the copyright holder is illegal. Nexcopy Incorporated accepts no responsibility for the copyright use or misuse of this equipment. It is the sole responsibility of the User to ensure legal rights of copyright material, digital content and intellectual property before engaging in production activity.

ABOUT NEXCOPY INCORPORATED

Thank you for purchasing Nexcopy's Professional USB Duplicator. Nexcopy manufactures a variety of flash memory duplication systems for data loading to USB and other flash memory devices. Our product line is continually growing, so if additional memory device data loading systems are needed, please visit Nexcopy.com. We hope you will consider us for all your production needs.

ABOUT THIS MANUAL

This manual is written for both novice and experienced computer Users. Please read through this operator's guide from beginning to end before using the unit. This User's manual will provide the necessary information to get your equipment configured and provide the information needed to partition, write protect and serialize USB flash memory.

INTRODUCTION

The USB200PRO is Nexcopy's flagship USB200PC twenty port USB duplicator with added functionality of our Partition Tool and CD-ROM emulator program. The minimum PC requirements found in the USB200PC manual also apply to the USB200PRO series duplicator.

Please reference the USB200PC User Manual for setup configurations and software installation.

The USB200PRO supports USB partitioning, CD-ROM emulation, Serial Number configuration and Write Protection of USB flash drives authorized and sold by Nexcopy.

NOTE: Nexcopy and the USB200PRO only support USB flash drives authorized and sold by Nexcopy. If the Nexcopy Partition Tool is used on flash memory other than what is certified by Nexcopy, User accepts all responsibility of resultant device. In most cases the drive will not partition correctly or not function properly after use of the partition software. The changes to unauthorized media will be permanent and non-recoverable. Nexcopy is not responsible for misuse or negligence in these situations where unauthorized media is used.

The USB200PRO is an advanced program and careful consideration to software settings and configurations are important, otherwise the User may experience undesirable results. Read this manual carefully and study the configuration instructions before attempting partitions, CD-ROM emulations or write protection functions.

CONFIGURATION SETTINGS

MODULES IN SOFTWARE:	PAGE
• USB Reset – Reset USB device	7
• Operations – copy functions	8
• 2 LUN operation – partition functions	10
• Set Device Information – VID/PID information	13
• Configure Serial Number – edit serial numbers	14
• Imaging - make image files (.img)	15
• Copy Secure – USB copy protection	16
• Contact Information	21

USB CONFIGURATION OPTIONS:

- Single Partition – Write Protected
- Dual Partition
 - a. Write protect 1st partition
 - b. Write protect 2nd partition
 - c. Write protect both partitions
- CD-ROM Partition
 - a. CD-ROM partition
 - b. CD-ROM with 2nd partition Read/Write
 - c. CD-ROM with 2nd partition write protected

NOTE: In the event the operator requires Copy Protection where content cannot be Copied Off the USB device, please contact Nexcopy about our [USB Copy Protection](#) solutions.

USB copy protection is different then write protection. Copy protection means the files cannot be copied off the flash drive. Write protection [Read Only] means files cannot be deleted or formatted off the drive and are permanently on the USB drive, yet Users may copy content off the drive.

USING THE SOFTWARE

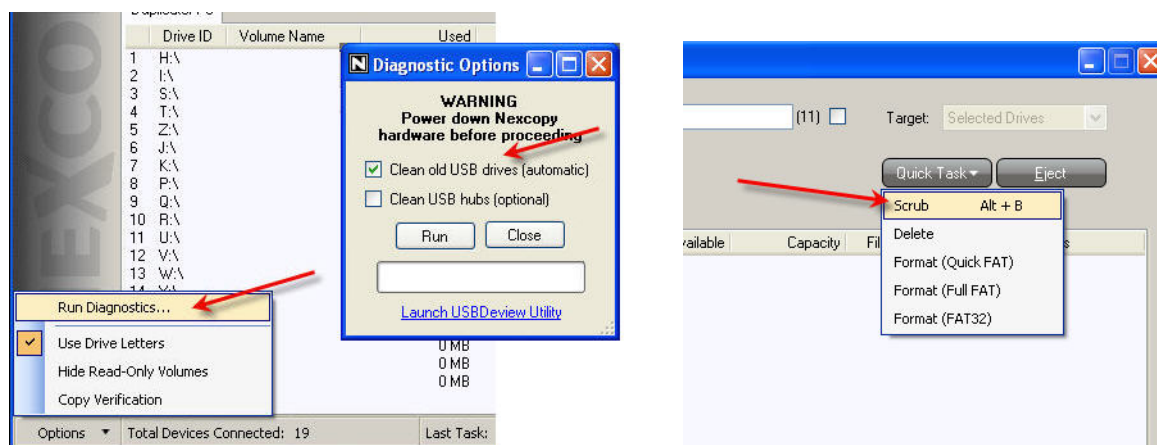
GENERAL USE

There are several settings and configurations a User should be aware of during normal operation of the PRO Series software.

USB is a great technology. It is simple to use, cross platform and an industry standard. However, connecting many devices to a single host computer, compounded with manipulating the drivers of the device can lead to problems. Therefore it is best practice to use the Nexcopy USBScrub utility before a production run, or if you feel devices are not working properly.

To run the USBScrub, go to OPTIONS > RUN DIAGNOSTICS > click RUN. You can also use the Quick Task button or Alt B to run USBScrub

This process will clean the Windows registry of any rogue entries created by faulty USB devices or devices not mounting correctly in the Windows operating system.



NOTICE:

Once a drive is partitioned, write protected or serial number edit, the USB device must be power cycled. Meaning...the computer will only display the resultant change until the USB stick is reconnected to the PC.

RESETTING A DEVICE

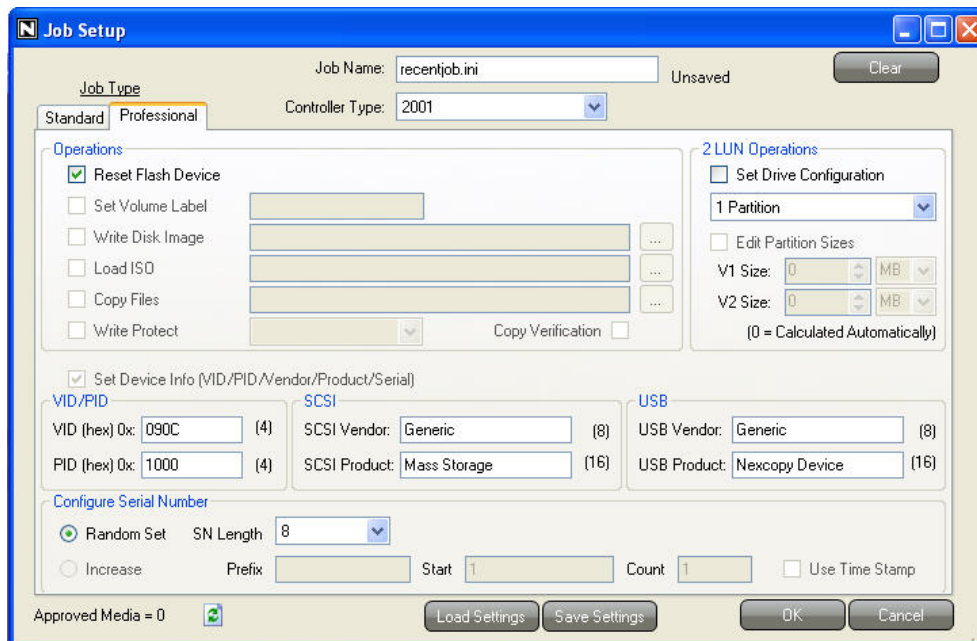
It is important to understand how to reset a device in the event a configuration setting was done incorrectly and the resultant drive is different than what you intended. For example, to clear a USB device from a dual partition or CD-ROM partition you will need to understand how to reset a device.

In the Nexcopy Drive Manager Software click **Setup**.

The default setting is “**Reset Flash Device**” This setting will restore the flash drive to its original manufacturer configuration. This configuration is a single read/write partition with an eight digit serial number.

Once the task is complete, it is required to reconnect the device. This process will show the resultant change.

NOTE: *Power cycling the duplicator box is not recommended. It is best to manually unplug and reconnect each USB device.*



Job Setup

Job Name: recentjob.ini Unsaved Clear

Job Type: Standard Professional Controller Type: 2001

Operations

- ☒ Reset Flash Device
- ☐ Set Volume Label
- ☐ Write Disk Image
- ☐ Load ISO
- ☐ Copy Files
- ☐ Write Protect
- Copy Verification ☐

2 LUN Operations

- ☐ Set Drive Configuration
- 1 Partition
- ☐ Edit Partition Sizes
- V1 Size: 0 MB
- V2 Size: 0 MB
- (0 = Calculated Automatically)

☒ Set Device Info (VID/PID/Vendor/Product/Serial)

VID/PID		SCSI		USB	
VID (hex) 0x:	090C (4)	SCSI Vendor:	Generic (8)	USB Vendor:	Generic (8)
PID (hex) 0x:	1000 (4)	SCSI Product:	Mass Storage (16)	USB Product:	Nexcopy Device (16)

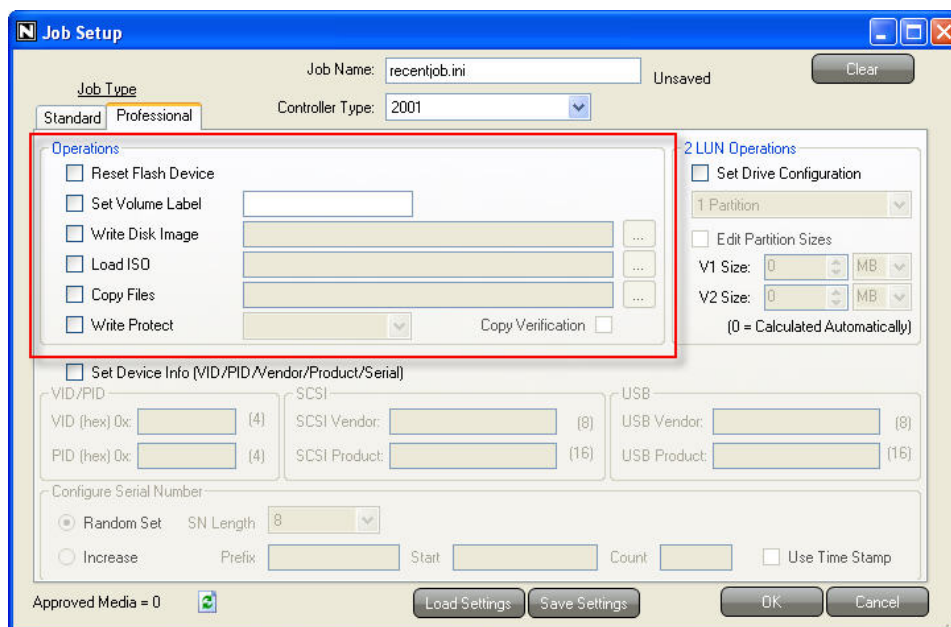
Configure Serial Number

- ☒ Random Set SN Length: 8
- ☐ Increase Prefix: Start: 1 Count: 1 Use Time Stamp ☐

Approved Media = 0

Load Settings Save Settings OK Cancel

OPERATIONS



RESET FLASH DEVICE

This operation will reset a USB device to it's original condition. The original condition is a single partition which is read/write at the full capacity of the USB flash drive.

SET VOLUME LABEL

This operation will set a **Volume Label** to the USB device. This USB specification will only allow 11 characters. This is only required if the IMG file or ISO file used for duplication does not have a Volume Label

WRITE DISK IMAGE

This field is used to point the PRO software to your master Image file [.img]. Image files are best used for duplication of large amounts of data, hundreds or thousands of files or a data load with a complicated directory structure

LOAD ISO

This field is used to point the PRO software to your master ISO file [.iso]. ISO files are required as your master data when creating a CD-ROM USB device.

COPY FILES

This field is used to point the PRO software to a master directory where all the files inside the directory will be “file copied” to the USB device. The **File Copy** method is quick, easy and best used for small data loads.

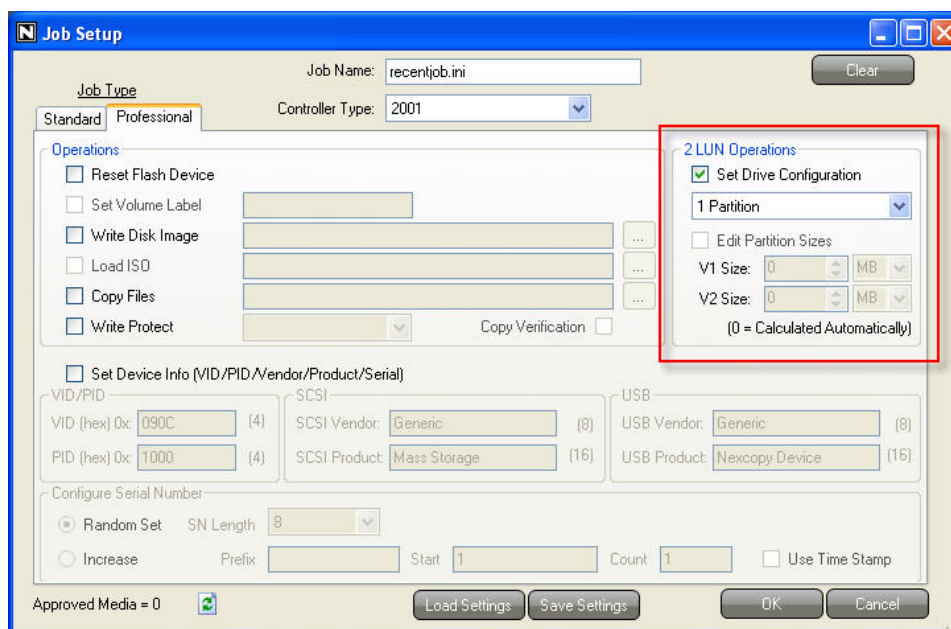
WRITE PROTECT

This operation lets the User set the Write Protection for the USB device. The User can set **1st partition** as write protected. **2nd partition** as write protected, or **Whole Device** as write protected.

NOTE: If the checkbox is left blank, no write protection will be applied, or write protection will be removed from a write protected, connected device.

NOTE: By definition a CD-ROM partition is write protected so it is not required to use this operation when loading an ISO image.

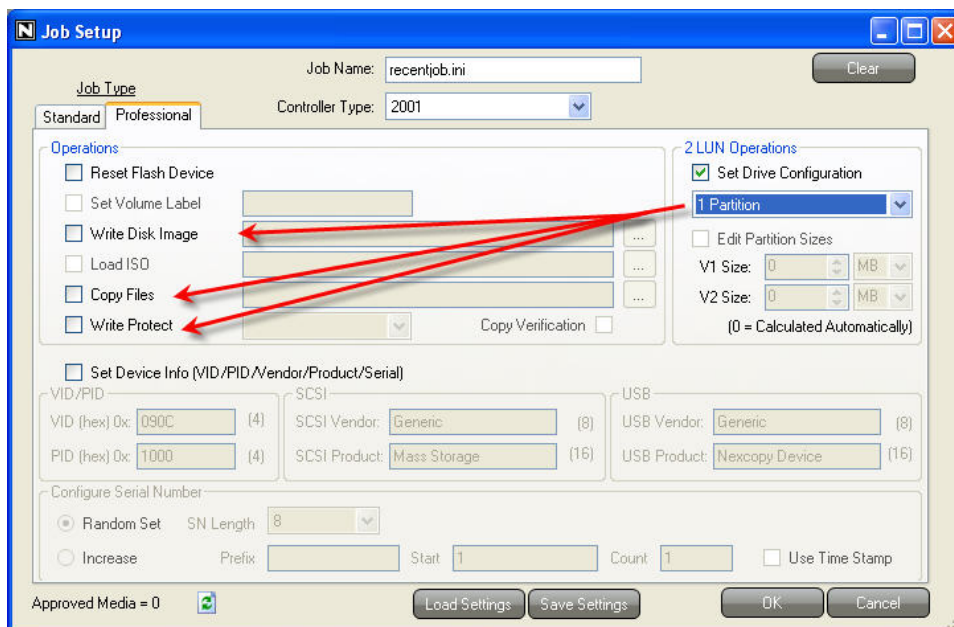
2 LUN OPERATIONS



SET DRIVE CONFIGURATION

This drop down menu lets the User configure the USB device as the final device, there are four options available:

- 1 Partition
- 2 Partitions
- CD-ROM Partition
- CD-ROM + Partition



Job Setup

Job Name: recentjob.ini

Controller Type: 2001

Job Type: Standard Professional

Operations

- ☐ Reset Flash Device
- ☐ Set Volume Label
- ☒ Write Disk Image
- ☐ Load ISO
- ☒ Copy Files
- ☒ Write Protect

2 LUN Operations

- ☒ Set Drive Configuration
- 1 Partition**
- ☐ Edit Partition Sizes
- V1 Size: 0 MB
- V2 Size: 0 MB
- (0 = Calculated Automatically)

☐ Set Device Info (VID/PID/Vendor/Product/Serial)

VID/PID: VID (hex) 0x: 090C (4) PID (hex) 0x: 1000 (4)

SCSI: SCSI Vendor: Generic (8) SCSI Product: Mass Storage (16)

USB: USB Vendor: Generic (8) USB Product: Nexcopy Device (16)

Configure Serial Number:

- ☒ Random Set SN Length: 8
- ☐ Increase Prefix: Start: 1 Count: 1
- ☐ Use Time Stamp

Approved Media = 0

Load Settings Save Settings OK Cancel

When the drive configuration is set, the corresponding “**Operations**” will show usable fields. In this example, a single partition can use the following methods for data loading and write protection:

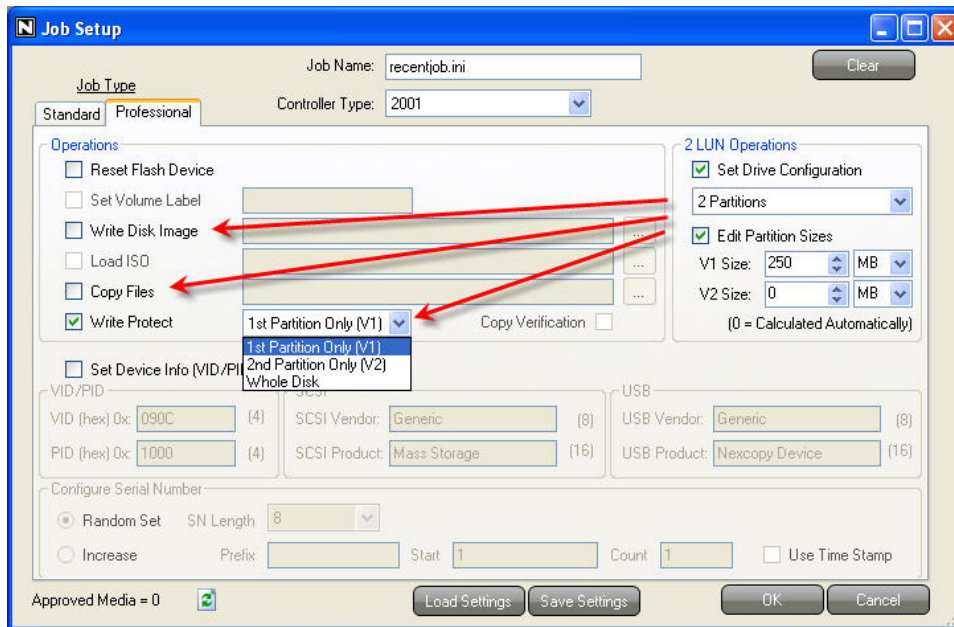
- Write disk image
- Copy Files
- Write Protect

EDIT PARTITION SIZES

The User is not required to edit the partition table size for each job. The PRO software will use the master .img file as the size for first partition. The balance of the drive can be left unused, or automatically converted to the second partition of a USB device.

NOTE: When the .img is used for the first partition, the partition table inside the .img file defines the partition size, **NOT** the .img file size itself. [Contact support](#) if this is not clear and additional information is needed.

To edit the partition sizes the “**2 Partitions**” option must be selected. To size the partition simply enter the desired size in Megabytes (MB) or Gigabytes (GB). **V1** is Volume 1, or first partition. **V2** is Volume 2, or second partition.

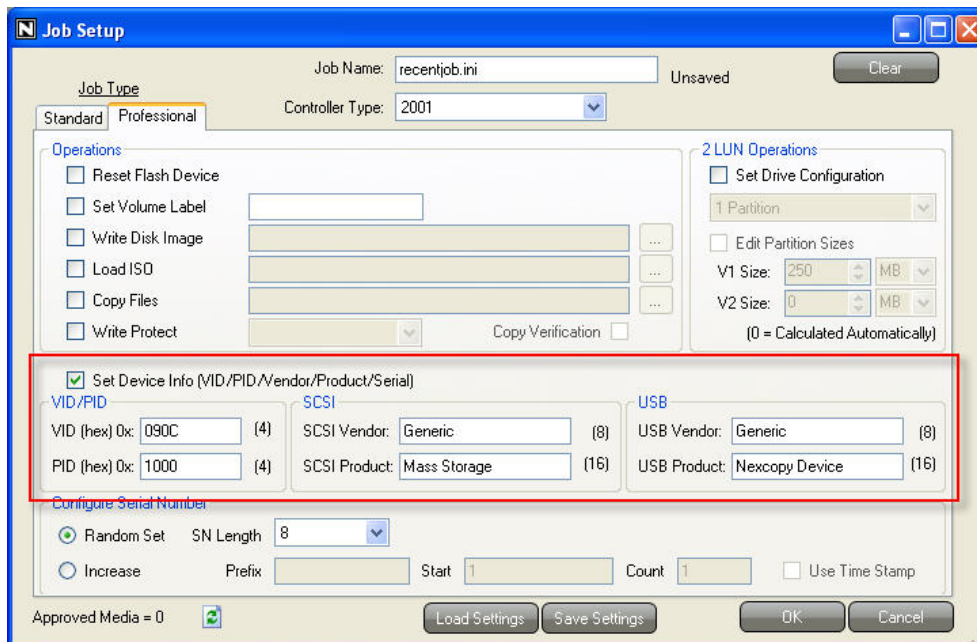


NOTE: When a USB device is set with multiple partitions only the first partition can have data loaded to it on the first pass. The data load can be written via **Write Disk Image** or **Copy Files** method. If data is required on the second partition, it must be performed during a following copy job. This is a limitation of Windows operating system, not Nexcopy software.

NOTE: Under “**1 Partition**” setting the disk partition size will be either the size of the original USB device, or the partition table setting inside the master .img file.

TIP: Use the “**2 Partitions**” setting to resize one of the partitions of the USB stick. Data load your content to the created, smaller partition. Use the Nexcopy Imaging Utility found in Options to make a master IMG file for mass production.

SET DEVICE INFO



SETTING VID/PID

The Vendor ID (**VID**) and Product ID (**PID**) are the hexadecimal values assigned to a USB device. These fields hold 4 characters and must conform to the hexadecimal naming convention: 0 - 9 and A – F (or lower case a-f)

SETTING SCSI

The SCSI Vendor field and SCSI Product fields may also be configured. The numbers to the right of the field indicate the maximum characters which can be entered.

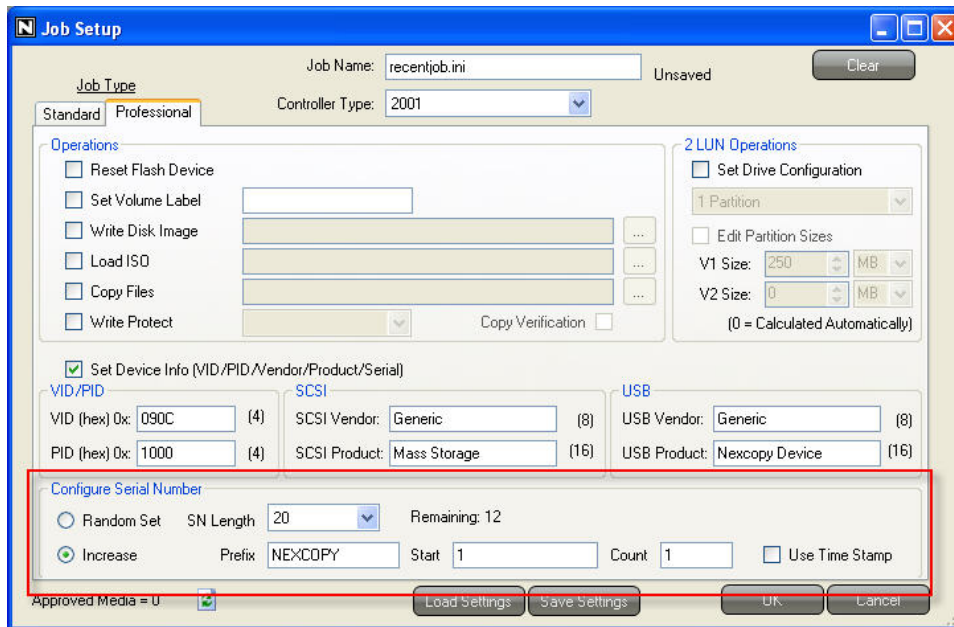
SETTING USB

The **USB Vendor** field and **USB Product** field may also be configured. Both SCSI and USB settings are case sensitive and will appear on the device as shown in the software.



TIP: The data in these fields are hard coded, meaning end-Users could not change, edit, update or manipulate them.

CONFIGURE SERIAL NUMBER



RANDOM SET

Serial numbers will be generated as a **Random Set** or generated through a controlled setting. The **Random Set** will have a serial number length (**SN Length**) which correlates to the drop-down menu.

INCREASE SERIAL NUMBER

Once the length of serial number is set, the User may generate numbers based on a **Prefix**, **Start** point and **Count** point. The User may also select a **Time Stamp** as serial number.

REMAINING

The “**Remaining**” number is a calculation of how many characters are left based on the **SN Length** selected and other input information.

TIP: When the User “**Saves**” the job file, the ending serial number will be automatically recorded. When a new job is started – say the next day – the User must “**Open**” the job file and the **Serial Number** will resume.

TIP: The serial number is hard coded, meaning end-Users could not change, edit, update or manipulate them.

MAKING IMAGE FILES (IMG)

DRIVE MANAGER IMAGE UTILITY

The PRO Drive Manager software will copy any .img file and lay it down to the USB targets. There are many ways to make image files, but Nexcopy has some quick and easy utilities to help.

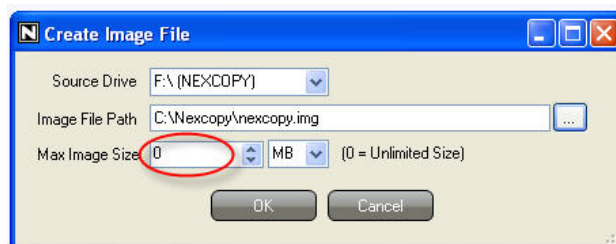
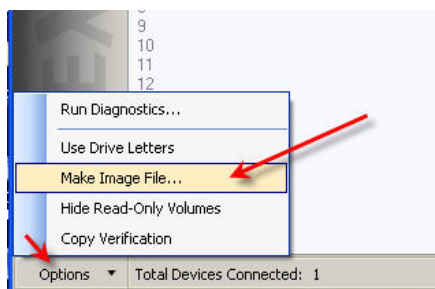
Image files are best used for data loading large amounts of data, or data with a complicated file structure. For example, the master data has many nested directories, or maybe 100s or 1000s of files and folders.

In addition, since most Users like to partition the USB stick as write protected for one partition and balance of drive as a Read/Write partition, the .img file becomes critical for mass production.

The PRO software will automatically lay down the .img data to the USB and automatically partition the remaining space on the drive as the 2nd partition. This makes the process quick and simple.

HOW TO: MAKE AN IMAGE FILE

1. Using the PRO software, partition a USB device so the first partition (**V1**) is set to the desired size.
2. Cycle the drive (disconnect and reconnect)
3. Data load cont ocess if trying to make bootable USB
4. Launch Drive Manager Image tool: **Options > Make Image File**
5. Point Image tool at V1 drive letter
6. Leave the Max Size as **ZERO**
7. Click **OK**



NOTE: The Image tool captures all boot code, partition table and any/all proprietary file formats. The tool makes a binary image of the master device.

COPY SECURE TECHNOLOGY

NEXCOPY COPY PROTECTION

Nexcopy developed proprietary copy protection technology for USB flash drives. The technology is used with Copy Secure flash drives purchased from Nexcopy. The Copy Secure software tab is available for users with PRO software; however the functionality of the tab requires USB media with a Copy Secure license loaded on the flash drive.

HOW OUR SOLUTION WORKS

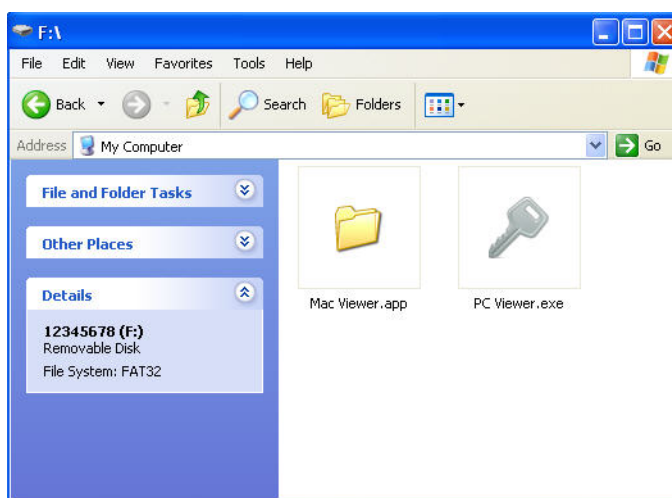
The CopySecure solution by Nexcopy is a digital rights management system for your intellectual property.

- The general concept is that we place your files on a USB write protected partition so the files cannot be deleted or formatted off the drive.
- Your files are then encrypted with DEA encryption (same technology used by credit card companies) so the files cannot be accessed by a third party.
- Finally, Nexcopy incorporates a custom Viewer application which decrypts the files and displays them as expected.
- Our Viewer application controls the ability to Save, Save As, Print, Copy-&-Paste, Time Limit settings and other DRM preferences.
- CopySecure has two Viewer applications, one for Mac and one for PC.

When the end-user receives a CopySecure drive, they are presented with two options:

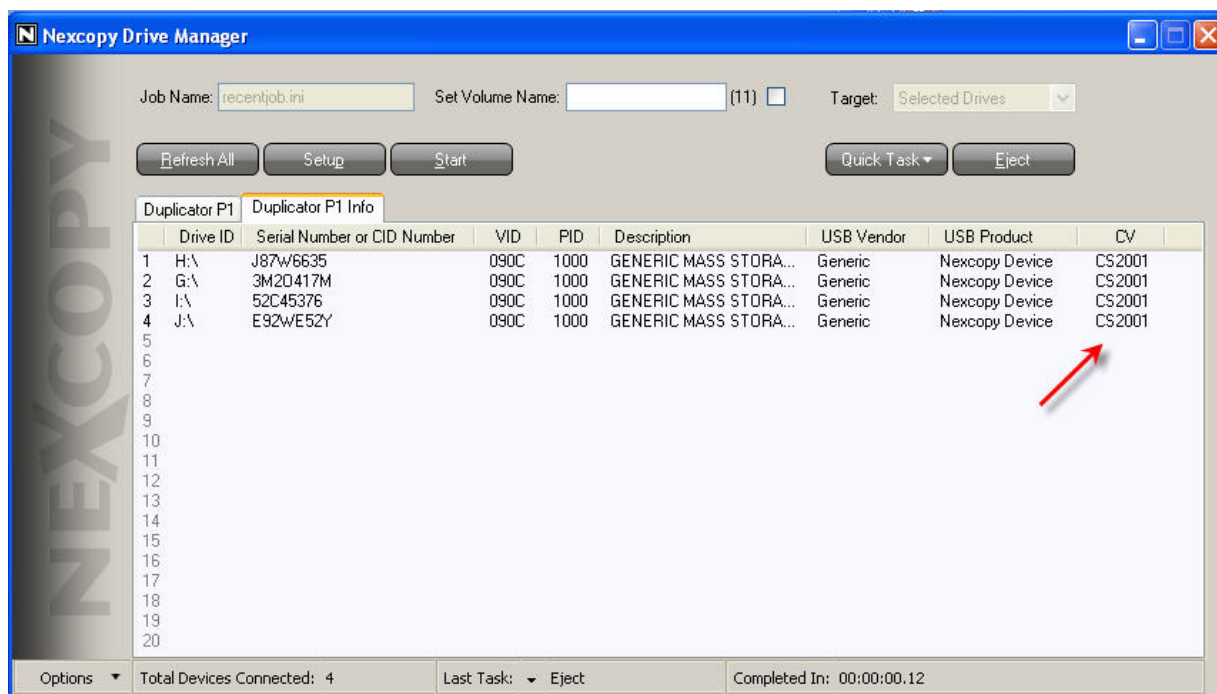
1. Open the PCViewer or
2. Open the MacViewer

We believe the end-user will understand to click PCViewer if on the PC, or MacViewer if on a Mac.



CHECKING FOR COPY SECURE DRIVES:

Connect media to the Nexcopy duplicator and click **Refresh All**. Click to the **Duplicator Info** tab in the software and view the Controller Version column or **CV**. If you see **CS2001**, then you have Copy Secure flash drives with a license.



The screenshot shows the Nexcopy Drive Manager window. At the top, there are fields for Job Name (recentjob.ini), Set Volume Name, and Target (Selected Drives). Below these are buttons for Refresh All, Setup, Start, Quick Task, and Eject. The main area displays a table of connected drives under the 'Duplicator P1' tab. The table has columns for Drive ID, Serial Number or CID Number, VID, PID, Description, USB Vendor, USB Product, and CV. A red arrow points to the CV column, which contains the value 'CS2001' for all listed drives.

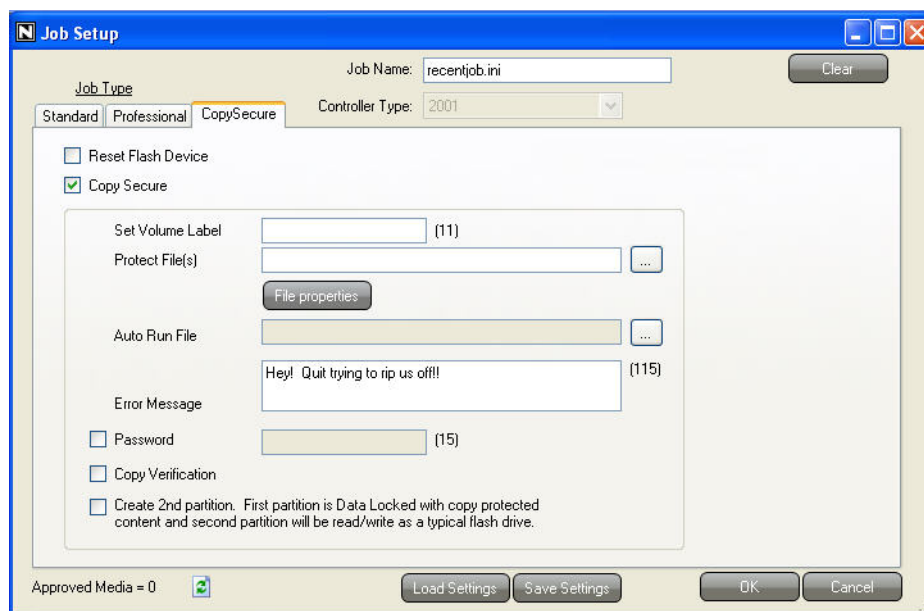
Drive ID	Serial Number or CID Number	VID	PID	Description	USB Vendor	USB Product	CV
1	H:\ J87W6635	090C	1000	GENERIC MASS STORA...	Generic	Nexcopy Device	CS2001
2	G:\ 3M2D417M	090C	1000	GENERIC MASS STORA...	Generic	Nexcopy Device	CS2001
3	I:\ 52C45376	090C	1000	GENERIC MASS STORA...	Generic	Nexcopy Device	CS2001
4	J:\ E92WE52Y	090C	1000	GENERIC MASS STORA...	Generic	Nexcopy Device	CS2001

At the bottom of the window, there is a status bar showing 'Total Devices Connected: 4', 'Last Task: Eject', and 'Completed In: 00:00:00.12'.

USING COPY SECURE SOFTWARE TAB:

Click to the Copy Secure software tab. Here you have two primary functions.

1. **Reset Flash Device** – This removes any previous copy protected files, removes any partitions and resets the drive to it's original condition. This function does not remove the license on the drive. This function can also be performed on the Professional Tab under Reset Flash Device.
2. **Copy Secure** – Make a Copy Secure flash drive.



The following are a list of features for the Copy Secure software tab:

- **Set Volume Label** – This is the area to name your drive. Windows has an 11 character maximum, thus you see the [11] to the right
- **Protect File(s)** – Point our software to the folder which contains your files to be copy protected. Our software will copy the files inside the folder, not the folder itself
- **File Properties** – This button lets you set properties to individual files. For example setting a PDF to be copy protected, yet ability to print. The default setting for any copy protected file is inability to Save or Print.
- **Auto Run File** – This field allows the user to flag a specific file to be opened upon the PCViewer or MacViewer being launched. If no file is selected, our Viewer will open to the Default Copy Secure directory. Here the user can select which file to open first.
- **Error Message** – In this field the content owner can customized the error message a counterfeit USB drive would present when the PCViewer or

MacViewer is launched. There are 115 characters available for the error message.

- **Password** – The password feature can be enabled for the Copy Secure drives here. The Password will be required before the PCViewer or MacViewer opens and displays the content. The password feature is a global function to the Copy Secure flash drive.
- **Copy Verification** – Turning this feature on will enable the Drive Manager software to verify the content written to the USB device
- **Create 2nd Partition** – This function allows the content owner to make a 2nd Read/Write partition with the left over space of the USB after the data load has been applied.

Once the configuration of your job is complete you may Save the file for future, repeat jobs, or simply click **OK** and go to the main page of Drive Manager.

From the main Drive Manager page click **START** to begin the job.

SETTING LICENSE AGREEMENT

In the event a project requires an Accept or Decline Licenses Agreement before viewing the content the content owner can perform the following.

The User may click Accept or Not Accept the license agreement.



The license agreement will open in the users default PDF reader and is not copy protected and does not have print restrictions.

Since the Copy Secure technology sits on a write protected partition the above message will display each time the PCViewer or MacViewer is launched. With a write protected partition we do not have the ability to log or flag the option a user selects for viewing.

HOW TO APPLY LICENSE AGREEMENT:

To Enable the License Agreement function the content owner must place the PDF in a specific location with a specific name. Do the following:

- Save the license agreement as **content_license.pdf**
- Place **content_license.pdf** in the following location before any production work is done with the USB200PRO system.

Note: ***If they installed to our default location***

<c:\Program Files\Nexcopy\Nexcopy Drive Manager\CopySecure\Mac Viewer.app\Contents\Resources>

The Drive Manager software will include the license agreement and enable the Accept or Not Accept message until the content_license.pdf is removed from the directory.

Note: *It's important to include or remove the document between jobs. In the event you have Saved the job in Drive Manager we will not save the license agreement document tied in with the project.*

LIMITATIONS OF COPY SECURE SOLUTION

Currently the Copy Secure solution by Nexcopy supports only 16 devices at a time in the production software. It does not matter which sockets are used on the USB200PRO duplicator, simply the limitation is that of 16 devices can be produced at a time.



YOU MAY CONTACT NEXCOPY:

Web: www.nexcopy.com/contact/

Phone: +1 949 481 6478

Email: contact@nexcopy.com

Please remember to register your product to receive software and hardware updates about your duplicator system. Registration is found at:

www.nexcopy.com/product-registration/