
NEXCOPY

QUICK START GUIDE

NOTICE

The Quick Start Guide is documentation to guide you through the hardware and software installation of your new Nexcopy equipment. This Guide applies to all PC based duplicators manufactured by Nexcopy. Please follow these instructions for successful installation. For software features and functions please read the Software User Manual found on your resource USB flash drive.

WHAT'S IN THE BOX

- Nexcopy duplicator machine[s]
- 1 Installation & Resource USB flash drive [Black]
- 1 USB security dongle [Green]
- 1 Power Cable
- 1 USB Type A-B Cable

MINIMUM PC REQUIREMENTS & SET-UP

- OS requirements: Windows XP (SP2 or higher) or 32bit Windows7 machine.
 - Vista is not supported.
 - If Windows7 64bit, please set your machine to 32bit mode.
 - Do NOT have mapped drives, networked system drives and uninstall CDROM emulation utilities
 - User must have Administrative rights
- PC hardware requirements: One Blue Aggregator Machine
 - 2.3GHz Intel processor or 1.8 Dual Core Processor, or better
 - 1GB RAM, 2GB is recommended.
 - Two High Speed USB Ports (Directly connected to motherboard)
- PC hardware requirements: Two Blue Aggregator Machines
 - 2.0 Dual Core Processor, or better
 - 2GB RAM, or better.
 - Three High Speed USB Ports (Directly connected to motherboard)
- PC hardware requirements: Three Blue Aggregator Machines
 - 2.3 Dual Core Processor, Quad Core Processor Ideal
 - 4GB RAM, or better.
 - Four High Speed USB Ports (Directly connected to motherboard)

NEXCOPY INCORPORATED



.NET 2.0 FRAMEWORK INSTALLATION

If you do not have .NET 2.0 Framework [or higher] installed on your system, we have provided the package for you.

To check: click START > CONTROL PANEL > ADD REMOVE PROGRAMS > Look for *.NET 2.0 Framework* on the list.

If you do not have .NET Framework listed, then: Copy the .NET 2.0 Framework Installation file from the Installation / Resource CD to your desktop and install .NET 2.0 Framework.

SOFTWARE & DONGLE INSTALLATION

****DO NOT CONNECT THE USB DONGLE****

STEP 1) INSTALL DRIVE MANAGER SOFTWARE

From your Nexcopy Installation / Resource USB drag and drop the NexcopyDriveManager setup file to your computer.

Double click the NexcopyDriveManager setup icon to begin installation. Follow the on-screen instructions for software installation.

The NexcopyDriveManager software default installs to:
<c:\mycomputer\programfiles\nexcopy\nexcopydrivemanager>

You may change the installation location during the installation process.

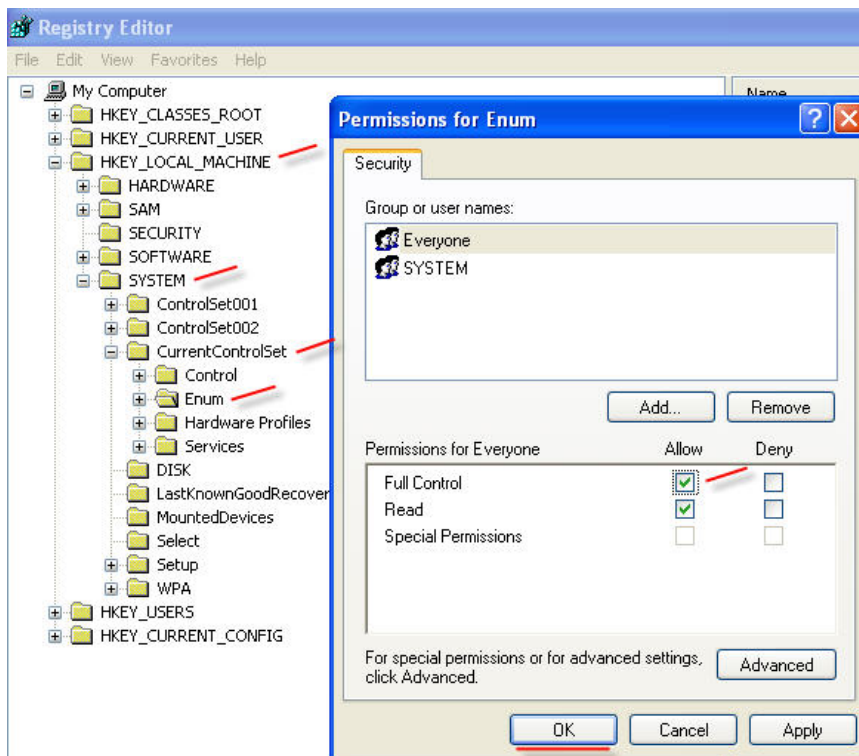
The NexcopyDriveManager software will not operate until the green USB dongle is successfully installed on your computer [Step 3]

STEP 2) QUICK CONFIGURATION

After installing the software you will need to optimize the Registry for complete functionality. The NexcopyDriveManager software access the devices at a very low level and requires full Permissions to perform these functions.

Do the following:

1. Click **Start > Run >** then type “regedit” > click **OK**
2. From here navigate to:
 - a. **HKEY_LOCAL_MACHINE >**
 - b. **SYSTEM >**
 - c. **CurrentControlSet >**
 - d. **Enum**
3. *Right Click* “Enum” and set the permissions
4. Be sure “**Full Control**” is selected and click “OK” or “Apply”



STEP 3) INSTALL USB DONGLE

NOTE: *Do not connect the green USB dongle until you have installed the NexcopyDriveManager software. [Step 1]*

After installing the NexcopyDriveManager software, connect the green USB dongle to any USB port on your system. The default setting for configuration will appear in the setup screen:



The green USB dongle software will automatically install.

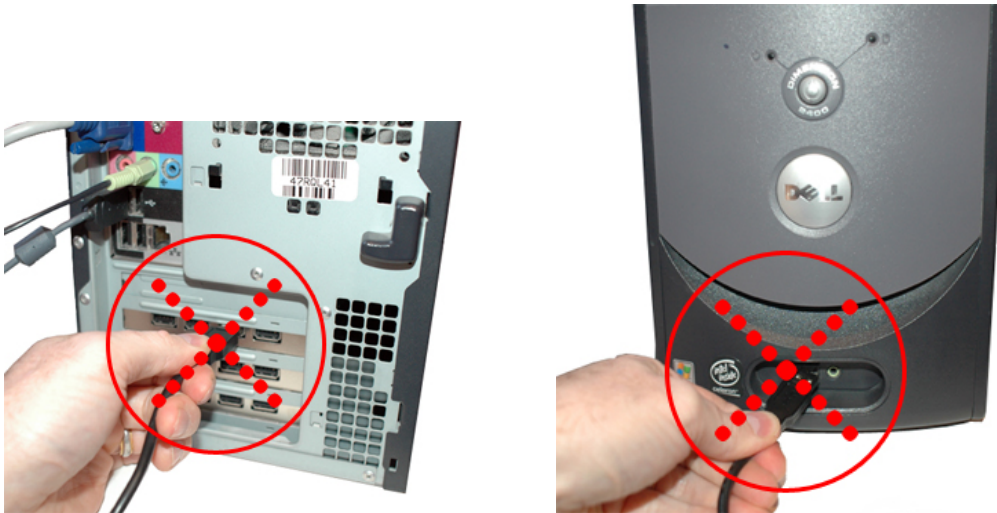


The green USB dongle will not take a drive letter in your system, however you will need to reserve a USB port in your production machine for the USB dongle. The USB dongle is required for the NexcopyDriveManager software to operate. *You may install the NexcopyDriveManager software on as many computers as needed, just take the USB Dongle with you.*

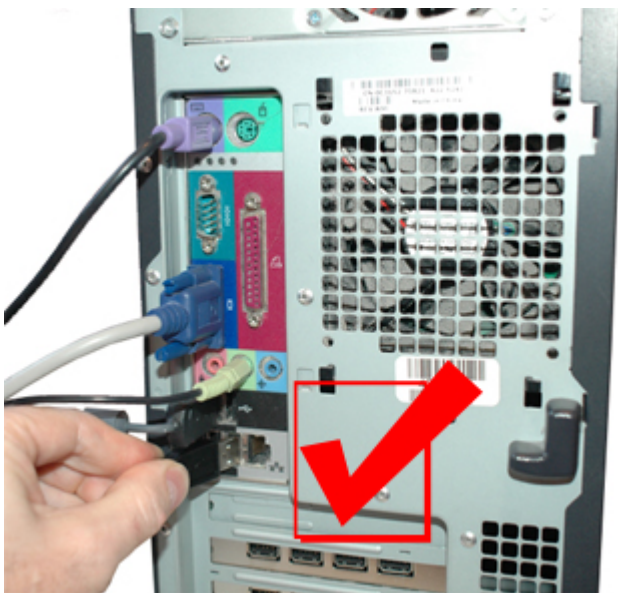
NEXCOPY INCORPORATED

MAKING THE HARDWARE CONNECTION

Nexcopy PC based duplicators require a connection to a USB port directly connected to the host computer motherboard. Do not connect the duplicator[s] through a front panel USB port or USB hub (internal or external). Do not connect the duplicator[s] to a USB PCI controller card.



Plug in the USB Type-B connector to the duplicator. Plug in the USB Type-A connector to the host computer. Be sure the Type-A connection is to a USB port directly connected to the host PC motherboard.



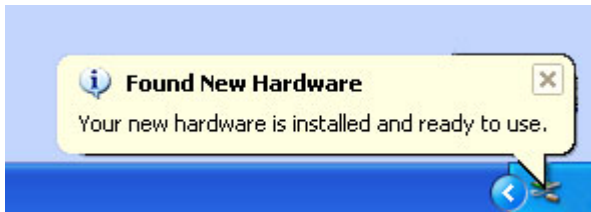
NEXCOPY INCORPORATED

22521 Avenida Empresa #128 Rancho Santa Margarita | CA | 92688
Phone: 949 481 6478 | Fax: 949 481 6479 | contact@nexcopy.com

Once the hardware connection is made, Microsoft Windows will begin the automatic installation of the blue aggregator box[es].



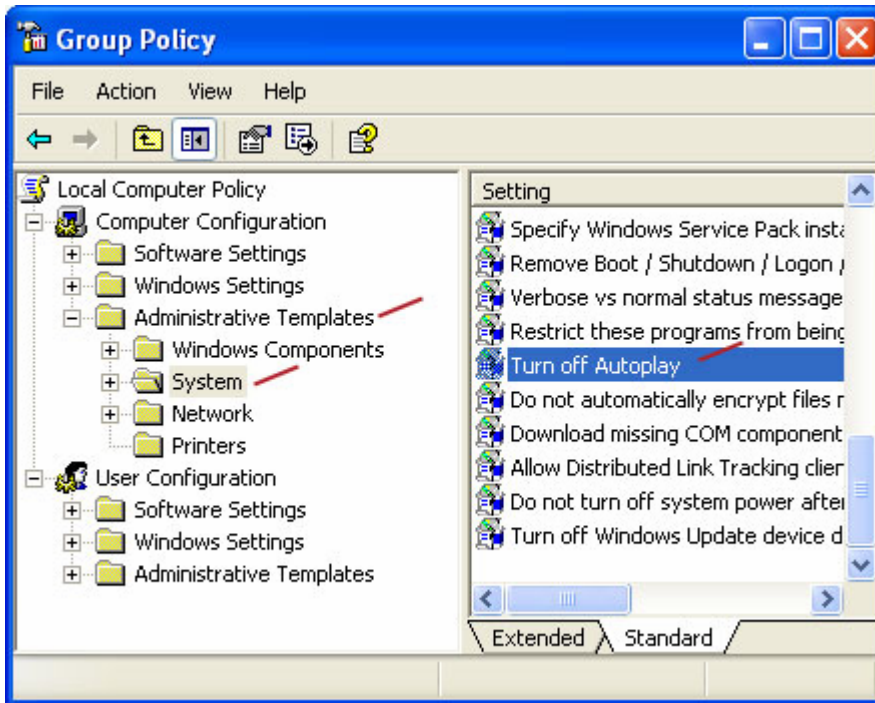
Once the hardware installation is complete you will see:



TURNING OFF POP-UP WINDOWS

If you would like to disable the pop-up dialogue Windows displays upon connecting flash drives [USB versions], you may perform the following adjustment:

- Click **Start » Run**. Type in "**gpedit.msc**" and click **OK**.
- Navigate to **Local Computer Policy » Administrative Templates » System**.



- On the right side of the Group Policy pop-up window you will see: "**Turn off Autoplay**" (you may need to scroll down some).
- Double click. For the "Turn off Autoplay Properties" dialogue box, click the radial button: **Enable** then select "**All Drives**" from the pull down menu.
- Click **OK** or **Apply**.

Note: this procedure also disables the Autoplay for CDROM drives.

The Drive Manager software may be loaded on as many computers as needed. The USB dongle is required for the software to run on the USB duplicator box.

It is highly recommended during production the host computer is **dedicated** to the process of flash memory duplication.

CONTACT NEXCOPY FOR TECHNICAL SUPPORT
 Phone: +1 949 481 6478 Technical Support is Ext 113
 eMail: support@nexcopy.com