



AMENDMENT FOR MULTIPLE AGGREGATORS

INSTALLATION FOR 2 OR 3 AGGREGATORS

Installation of multiple aggregators [blue boxes] is the same as with the first aggregator. Please follow the instructions in the Quick Start guide before proceeding with installation of box two and/or three.

Be sure to install the Drive Manager software first and one aggregator before proceeding to adding additional boxes to the host computer.

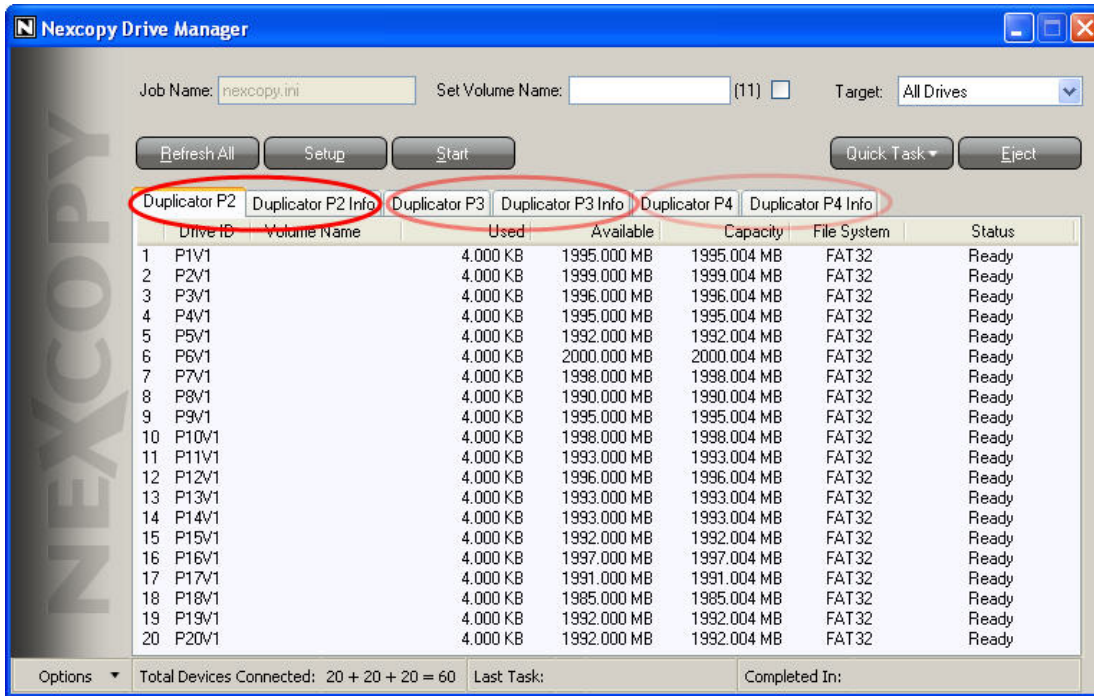
To install additional boxes, simply connect the aggregator to additional USB ports on the host computer system.

NOTE: Be sure the USB cable is connected to a USB port located on the motherboard. DO NOT connect the boxes through a USB hub, front USB port of a tower PC or USB 1.0 ports.

NEXCOPY INCORPORATED

USE OF SOFTWARE WITH ADDITIONAL BOXES

The Drive Manager software will automatically detect additional aggregators when they are connected to the host PC. The Drive Manager will assign new Tabs for each aggregator connected.



Above we see three aggregators connected. The Drive Manager detects they are connected to motherboard USB Port 2, 3 and 4...thus Nexcopy assigns tabs as such: DuplicatorP2, DuplicatorP3, DuplicatorP4.

TIPS ABOUT USING MULTIPLE AGGREGATORS

The Nexcopy solution is modular in design and provides the user flexibility in how the equipment is used. The aggregators can be [all] connected to a single host computer, or broken out with single boxes connected to multiple host computers. Here are a list of other items to know about the Nexcopy equipment:

- Only One security dongle is required per host computer, regardless of the number of aggregators connected [max aggregators per PC = 3].
- A Green security dongle is required for each host PC being used in the event the user connects single aggregators to multiple computers.
- Please keep all security dongles!
- The Nexcopy solution is a modular design. Meaning you can use the system as one large system or break the boxes apart to different host PC machines.
- Using multiple aggregators is best suited for smaller data loads of 1GB or less. For larger data load jobs, it is recommended to assign one box to each host computer. This will increase your overall throughput. **NOTE:** With data loads over 1GB the 2 and 3 box systems will easily perform the task, but throughput speed might decrease.
- Best speed performance will be through the COPY DEVICE [Short Image] copy function OR using the Copy Image function. Please reference the software manual for more details.
- All software functions operate the same for a single aggregator as it does with multiple aggregators.
- It is recommended to label the aggregators in accordance with the Tabs the Drive Manager assigns. This is the same USB port labeling the PC uses for the motherboard. This will make it easier for the user to identify the box in relation to the software.
- At the bottom of the software you will see the total number of devices connected after “Refresh” is clicked. The number ordering reflects the Tab order in Drive Manager. Example if one box ends up being short [say a bad drive] you know which tab/box to investigate.

10	P10V1	4,000 KB	1998.
11	P11V1	4,000 KB	1993.
12	P12V1	4,000 KB	1996.
13	P13V1	4,000 KB	1993.
14	P14V1	4,000 KB	1993.
15	P15V1	4,000 KB	1992.
16	P16V1	4,000 KB	1997.
17	P17V1	4,000 KB	1991.
18	P18V1	4,000 KB	1985.
19	P19V1	4,000 KB	1992.
20	P20V1	4,000 KB	1992.
Options ▾	Total Devices Connected: 20 + 20 + 20 = 60		Last Task:

NEXCOPY INCORPORATED

Here is an example of a missing drive with in a three aggregator setup. Notice the second number in “Total Devices Connected” is related to the second Tab of the Drive Manager software:

The screenshot shows the Nexcopy Drive Manager interface. At the top, there are fields for Job Name (necopy.ini), Set Volume Name, and Target (All Drives). Below these are buttons for Refresh All, Setup, Start, Quick Task, and Eject. The main area contains a table with columns for Drive ID, Volume Name, Used, Available, Capacity, File System, and Status. The table lists 20 drives, with drive 10 missing. A red arrow points from the 'Total Devices Connected' field at the bottom to the 'Used' column of drive 10. The 'Total Devices Connected' field shows the calculation 20 + 19 + 20 = 59.

Duplicator P2	Duplicator P2 Info	Duplicator P3	Duplicator P3 Info	Duplicator P4	Duplicator P4 Info	
Drive ID	Volume Name	Used	Available	Capacity	File System	Status
1	P1V1	4,000 KB	1986,000 MB	1986,004 MB	FAT32	Ready
2	P2V1	4,000 KB	1999,000 MB	1999,004 MB	FAT32	Ready
3	P3V1	4,000 KB	1998,000 MB	1998,004 MB	FAT32	Ready
4	P4V1	4,000 KB	1993,000 MB	1993,004 MB	FAT32	Ready
5	P5V1	4,000 KB	1997,000 MB	1997,004 MB	FAT32	Ready
6	P6V1	4,000 KB	1992,000 MB	1992,004 MB	FAT32	Ready
7	P7V1	4,000 KB	1994,000 MB	1994,004 MB	FAT32	Ready
8	P8V1	4,000 KB	1997,000 MB	1997,004 MB	FAT32	Ready
9	P9V1	4,000 KB	1997,000 MB	1997,004 MB	FAT32	Ready
10						
11	P11V1	4,000 KB	1997,000 MB	1997,004 MB	FAT32	Ready
12	P12V1	4,000 KB	1996,000 MB	1996,004 MB	FAT32	Ready
13	P13V1	4,000 KB	1996,000 MB	1996,004 MB	FAT32	Ready
14	P14V1	4,000 KB	1991,000 MB	1991,004 MB	FAT32	Ready
15	P15V1	4,000 KB	1991,000 MB	1991,004 MB	FAT32	Ready
16	P16V1	4,000 KB	1996,000 MB	1996,004 MB	FAT32	Ready
17	P17V1	4,000 KB	1991,000 MB	1991,004 MB	FAT32	Ready
18	P18V1	4,000 KB	1986,000 MB	1986,004 MB	FAT32	Ready
19	P19V1	4,000 KB	1991,000 MB	1991,004 MB	FAT32	Ready
20	P20V1	4,000 KB	1998,000 MB	1998,004 MB	FAT32	Ready

Options Total Devices Connected: 20 + 19 + 20 = 59 Last Task: Completed In:

CONTACT NEXCOPY FOR TECHNICAL SUPPORT

Phone: +1 949 481 6478 Technical Support is Ext 113

eMail: support@nexcopy.com

NEXCOPY INCORPORATED

27762 Antonio Parkway, Suite L1120 | Ladera Ranch | CA | 92694
 Phone: 949 481 6478 | Fax: 949 481 6479 | contact@nexcopy.com